

RAM MANUFACTURING LTD.
Standard Work Procedure

REV 0

Date: August 18, 2015

| | |
|------------|-----------------------|
| Product: | Trus-T-Lift |
| Operation: | Setting Carriage Gate |

I. Supplies

3mm Allen wrench
3/8" socket
Level
Crescent wrench
9/16" wrench
Robertson #2 screwdriver

II. Procedure

Note: tower and base frame must be secured to building before setting carriage gate

1. Manually adjust levelling bolts to ensure the carriage platform is level – ref. figure 1,2



Figure 1

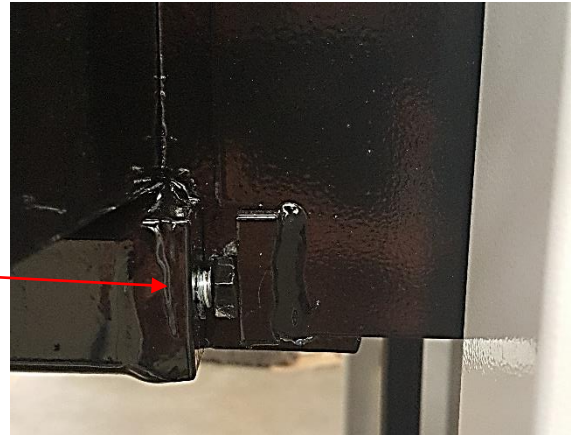


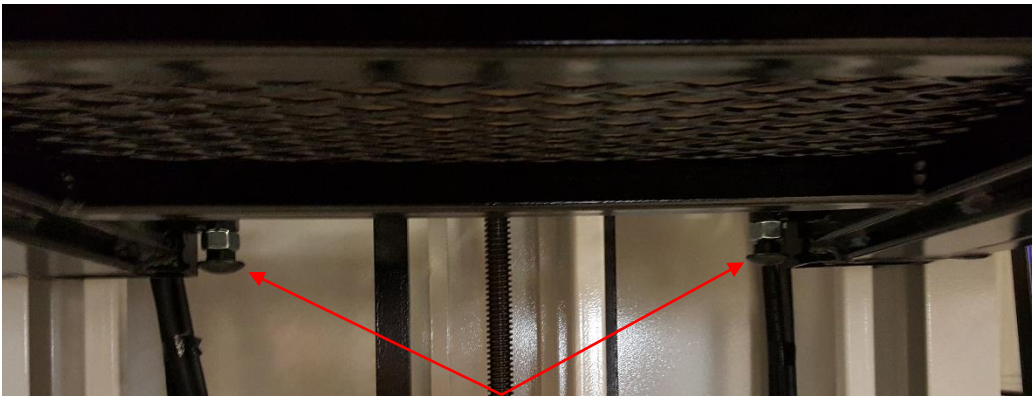
Figure 2

RAM MANUFACTURING LTD.
Standard Work Procedure

2. Identify and locate mechanical stops – 5/8” carriage bolts – ref. figure 3,4



Figure 3, 4
5/8” carriage bolt – mechanical stop



3. Lower carriage until mechanical stop(s) are resting on the foundation – ref. figure 5

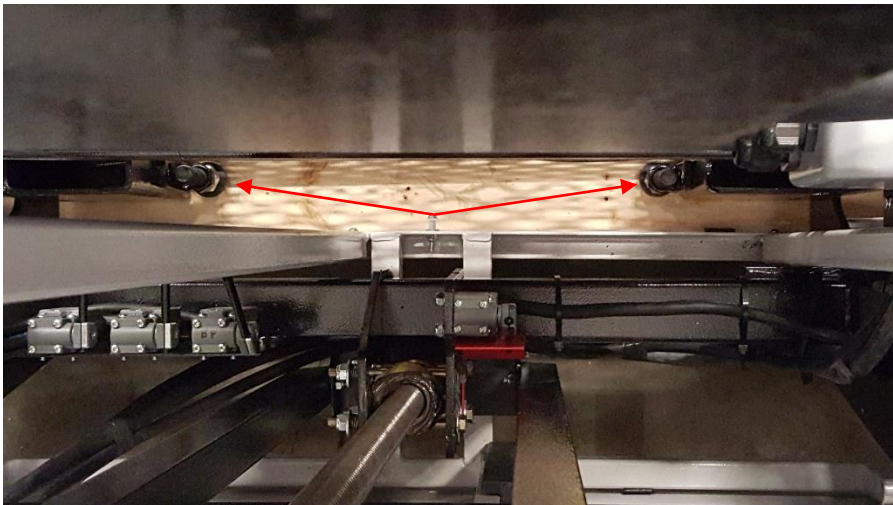


Figure 5
Engaging mechanical stops

*Wood blocks are used in testing to represent the concrete foundation

RAM MANUFACTURING LTD.
Standard Work Procedure

4. Manually adjust mechanical stops so they contact the foundation at the same time, this will prevent the carriage from twisting – ref. figure 6

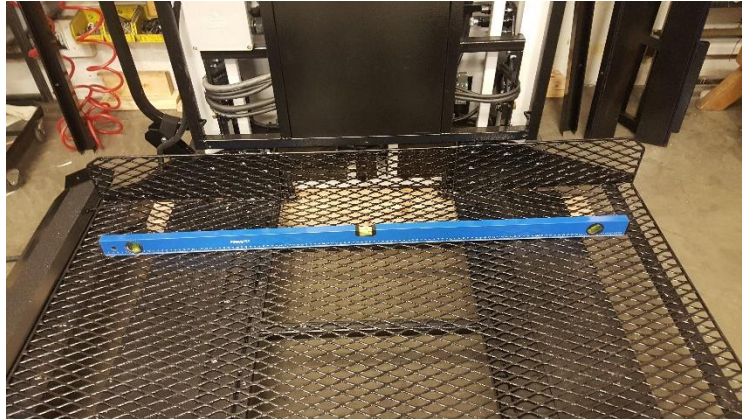


Figure 6

5. Loosen all interlock and interlock tab mounting bolts in order to center the gate lock in the interlock, steps 6 – 8 give a detailed explanation of the centering process
6. Ensure that the magnetic stop contacts the carriage and not the gate lock. Adjust the position of the interlock within the slot and tighten interlock position bolts – ref. figure 7

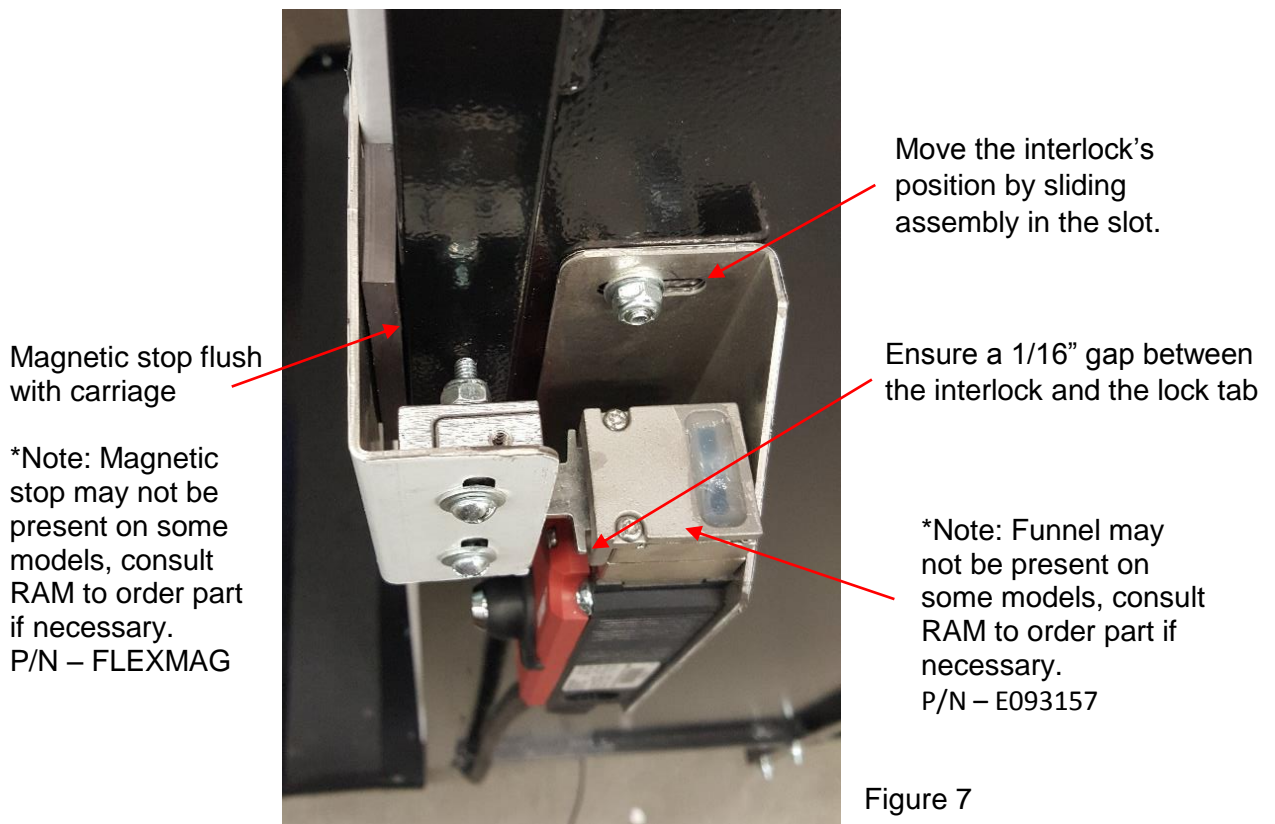


Figure 7

RAM MANUFACTURING LTD.
Standard Work Procedure

7. Adjust the vertical position of the lock tab within the interlock and then tighten vertical adjustment bolts – ref. figure 8,9



Figure 8

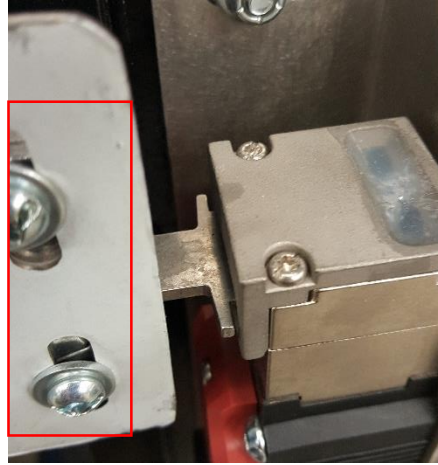


Figure 9

8. Adjust the horizontal position of the lock tab within the interlock and then tighten horizontal adjustment bolts – ref. figure 10

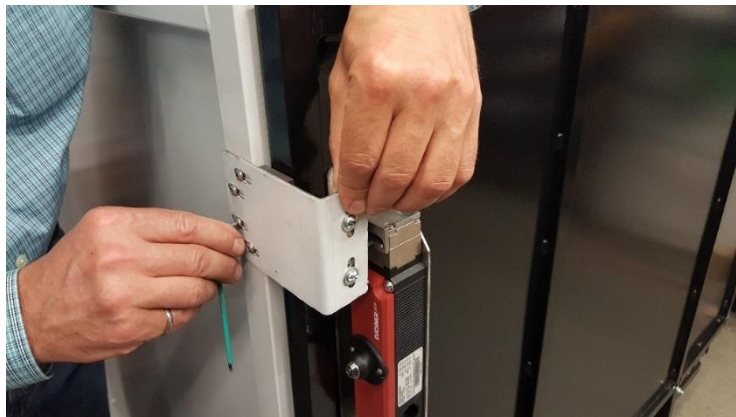


Figure 10

RAM MANUFACTURING LTD.
Standard Work Procedure

9. Set tension spring so that the carriage gate will freely close when the lock tab is roughly 6" from the closed position. Remove the pin and make adjustments (tighten/loosen) with an Allen key then return the pin to secure – ref. figure 12,13



Figure 12



Figure 13

10. Test lift with weight in the carriage and ensure that the spring tension is still set correctly, that the magnetic stop still contacts the carriage and that the gate lock remains centered in the interlock

RAM MANUFACTURING LTD.
Standard Work Procedure

III. Revisions

| Rev Number | Description | Revised By | Approved By | Revision Date |
|------------|-------------|------------|-------------|---------------|
| | | | | |
| | | | | |
| | | | | |
| | | | | |
| | | | | |
| | | | | |