



# TRUS-T-LIFT SUPPLEMENTAL MANUAL #2



## LANDING DEVICES



## Contents

Section 1: Introduction .....	1
Section 2: Safety Information .....	1
2.1: Symbols and Definitions .....	1
2.2: Additional Symbols .....	1
2.3: Safety Notes.....	2
Section 3: Upper Landing Gate.....	3
Section 4: Landing Door.....	5
Section 5: Remote Call Station.....	5
Section 6: Interlock.....	6

## Section 1: Introduction

This supplemental manual has been provided to walk you through the safe and efficient installation of Trus-T-Lift Landing Devices. Please read this manual, as well as the main installation manual, thoroughly before installing and operating your lift. We recommend your lift and any add-ons be installed and serviced by a qualified technician.

## Section 2: Safety Information

### 2.1: Symbols and Definitions

The following notations will be used through this manual to indicate areas that may present special risks or consideration.

#### DANGER

Danger messages indicate an imminently hazardous situation, which, if not avoided, could result in serious injury or even death.

#### Caution!



Caution messages indicate a potentially hazardous situation which, if not avoided, could result in serious injury, death, or damage to equipment.

#### Note

Note messages provide information, such as reminders, general information or additional guidelines that may provide guidance to the installer.

### 2.2: Additional Symbols

The following are additional symbols and conventions used through the manual:

	<b>Detail callout</b> , used to call attention to a detailed mentioned in the body of the instructions.		<b>Step Callout</b> , labels which step the given diagram relates to
---	---	---	--

## 2.3: Safety Notes

### Caution!

Read all instructions thoroughly before installation or use of this lift. Failure to follow the instructions in this manual and the associated manuals for testing and operation could result in serious injury or death. In addition, it will render RAM's warranty null and void.

Do not connect or disconnect wiring while equipment power is on. Before servicing, disconnect all power to the equipment. Failure to do so could result in significant injury or even death.

System may start unexpectedly upon application of power. Unpredictable equipment movement may result in serious injury or death. Use caution when applying power to the unit during the installation process.

RAM Elevators + Lifts Inc. (RAM) disclaims any and all liability for any personal injury or property damage resulting from the operation of a product that has been modified from the original design. No person or company is authorized to change the design of the product without written authorization by RAM.

Do not use an improper voltage source or a power source that provides poor quality power. This may present a significant FIRE HAZARD and/or permanent damage to the equipment.

Do not override any of the safety devices provided with the lift. Doing so will likely lead to serious injury or even death.

Ensure that there is nothing obstructing the carriage travel before operating the lift.

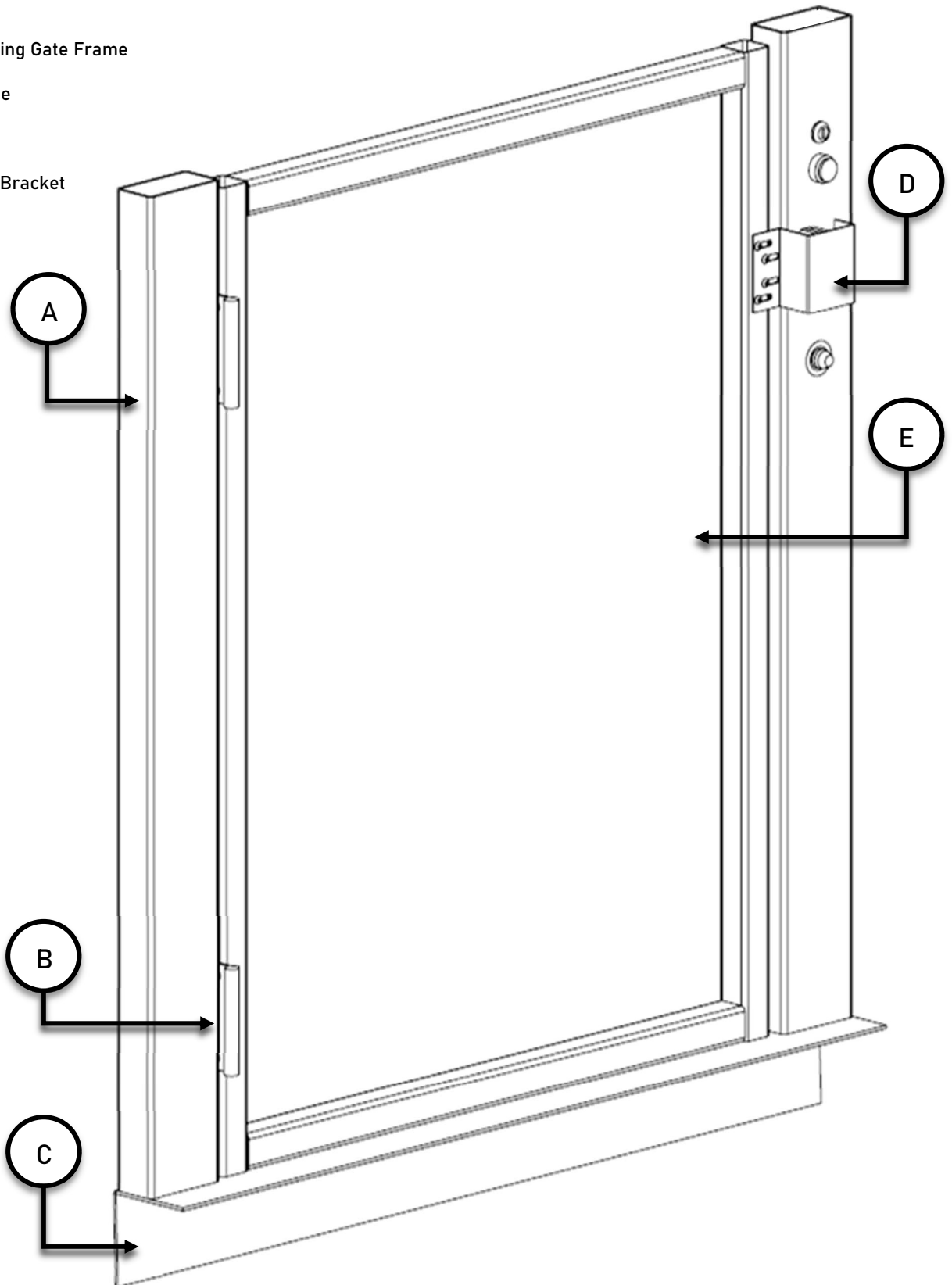
Ensure there is a minimum of 2in (50mm) and a maximum of 3in (75mm) clearance between any part or edge of the carriage that could possibly be used as a supporting handhold and any part of the fixed installation to prevent the trapping of a hand during the travel of the carriage. See RAM installation drawings for details.

The lift is intended for use by people and not to be used for cargo or other purposes. Lifting capacity is up to a maximum of 750 lb. unless otherwise noted on the lift and in RAM's supplied documentation. **(DO NOT OVERLOAD THE LIFT)**. Overloading the lift will render RAM's warranty null and void.

This list of warnings may not be exhaustive, due care around equipment should be observed

### Section 3: Upper Landing Gate

- A. Upper Landing Gate Frame
- B. Spring Hinge
- C. 4"x4" Angle
- D. Interlock & Bracket
- E. Door Panel



## Materials

Tools		Components	
Name	#	Name	#
• Combination Screwdriver	1	• Lift Assembly	1
• Wire Strippers	1	• Landing Gate & Interlock	1
• Electric Hand Drill	1	• Nylon Tie Straps	1
○ With bit and tap specifically for your preferred fasteners		• Preferred Wire Terminators	7

## Instructions

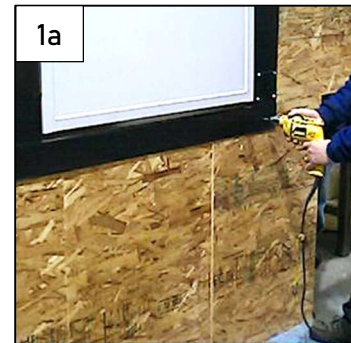
**Note that these steps are to be carried out before moving the lift into position (Section 4.7 in the main manual).**

### Note

These procedures are not the only method for installing an upper landing gate, just the recommended procedure from RAM.

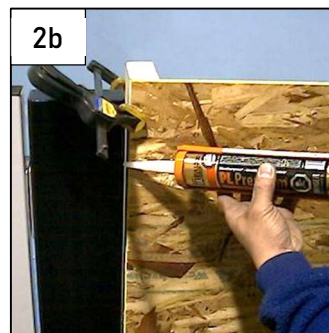
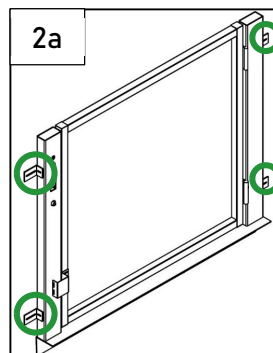
1) Mount the gate to your landing using one of two ways:

- Drill through the 4"x4" angle on the bottom of the door frame and use screws or lag bolts as shown in the diagram on the right, or
- Use a Polyurethane Adhesive to mount the threshold to the upper landing.



2) Mount the Upper Gate Posts to the existing structure in one of two ways:

- Drill and tap four holes into the posts (two on each side), and use the provided gate mounting flanges as shown in the left image, or
- Use the Polyurethane Adhesive in conjunction with clamps to hold in place as shown in the right image.



**DANGER**

Ensure that before carrying out the next step, the lift has been disconnected from power. Not doing so can damage the unit, and lead to injury and/or death.

- 3) Wire the gate's interlock into the tower as per the provided electrical schematics and wiring diagrams, using protective electrical conduit as per the applicable electrical codes.

## Section 4: Landing Door

The installation of a Landing Door is very similar to the installation of a gate, just taller. Follow the previous procedure to install a landing door, taking into consideration the greater height of a landing door.

**DANGER**

Ensure that the lift has been disconnected from power before installing the following components. Not doing so can damage the unit, and lead to injury and/or death.

## Section 5: Remote Call Station



A Trus-T-Lift Remote Call Station can be used to call the carriage to the landing, or also send the carriage to an alternate landing when using a remote call/send. Each can be ordered with a optional key switch to control use.

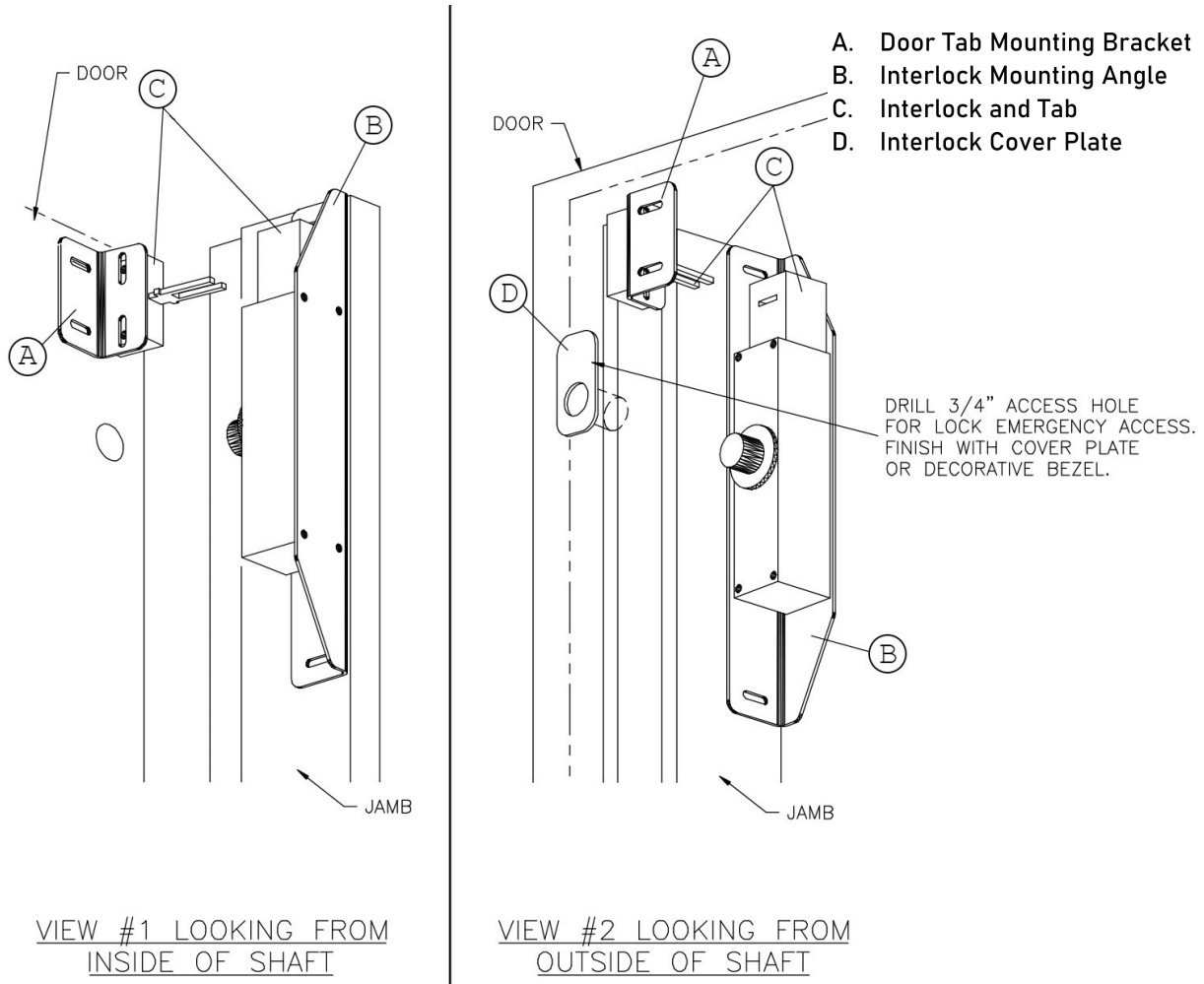
**Note**

If you have a call station with a key switch, the lift **will not operate unless the key is in the on position** (horizontal).

To install a call station, simply mount it in a suitable location, and wire it into the lift's top junction box as per the provided electrical schematics and wiring diagrams, using protective conduit as per the applicable electrical code requirements.

## Section 6: Interlock

Interlocks serve to keep landing doors and gates closed when the lift is not at that landing.



To install the interlock first locate the interlock & bracket on the door jamb as shown in view #2. With the door closed position near the top of the door jamb with the actuator tab & bracket inserted in the lock to determine the approximate position of lock and tab. Secure the interlock bracket to the jamb and the tab bracket to the door using the wood screws provided. Note that the interlock and actuator tab mounting brackets are slotted allowing for full three axis adjustment.

Once the interlock and the interlock tab have been mounted, wire the interlock into the lift as per the provided electrical schematics and wire diagrams using protective conduit as per the applicable electrical codes.