

INDOOR/OUTDOOR
VERTICAL PLATFORM LIFT (VPL)

Affordable Access

FLEX LIFT



RESIDENTIAL

trustram.com
1-800-563-4382



FLEXIBLE DEPENDABILITY

With its compact flexible design and simple installation, the Flex Lift's legacy of affordable mobility spans over 35 years.

The Flex Lift's modular and configurable design allows for quick adaptation to meet your specific site requirements. Whether you need to navigate unique architectural features or accommodate various accessibility needs, the Flex Lift can be tailored to fit seamlessly into your space.

Engineered for both indoor and outdoor spaces, the Flex Lift is an intuitive wheelchair lift for vertical rises up to 14ft. Oversized Soft Touch Controls offer riders total independence, even with limited dexterity.

The Flex Lift features a durable, non-slip metal platform with high 42" walls for year-round safety. Its proprietary drive system ensures quiet, reliable, and weather-resistant operation, even in extreme conditions. Designed for comfortable travel between floors or access to garages and decks, the RAM Flex Lift breaks down barriers to enhance your living experience.

36" x 48" Straight Through



36" x 54" Straight Through



36" x 60" Straight Through



42" x 48" 90 Degree



42" x 54" 90 Degree



42" x 60" 90 Degree



THE HIGHLIGHTS

IDEAL FOR:



Private
Residence



Indoor
Use



Outdoor
Use



Wheelchairs

LIFTING CAPACITY:

750 LBS

TRAVEL SPEED:

8 FT/MIN

TRAVEL DISTANCE:

UP TO 14 FT

ENTRANCE/EXIT POINTS:

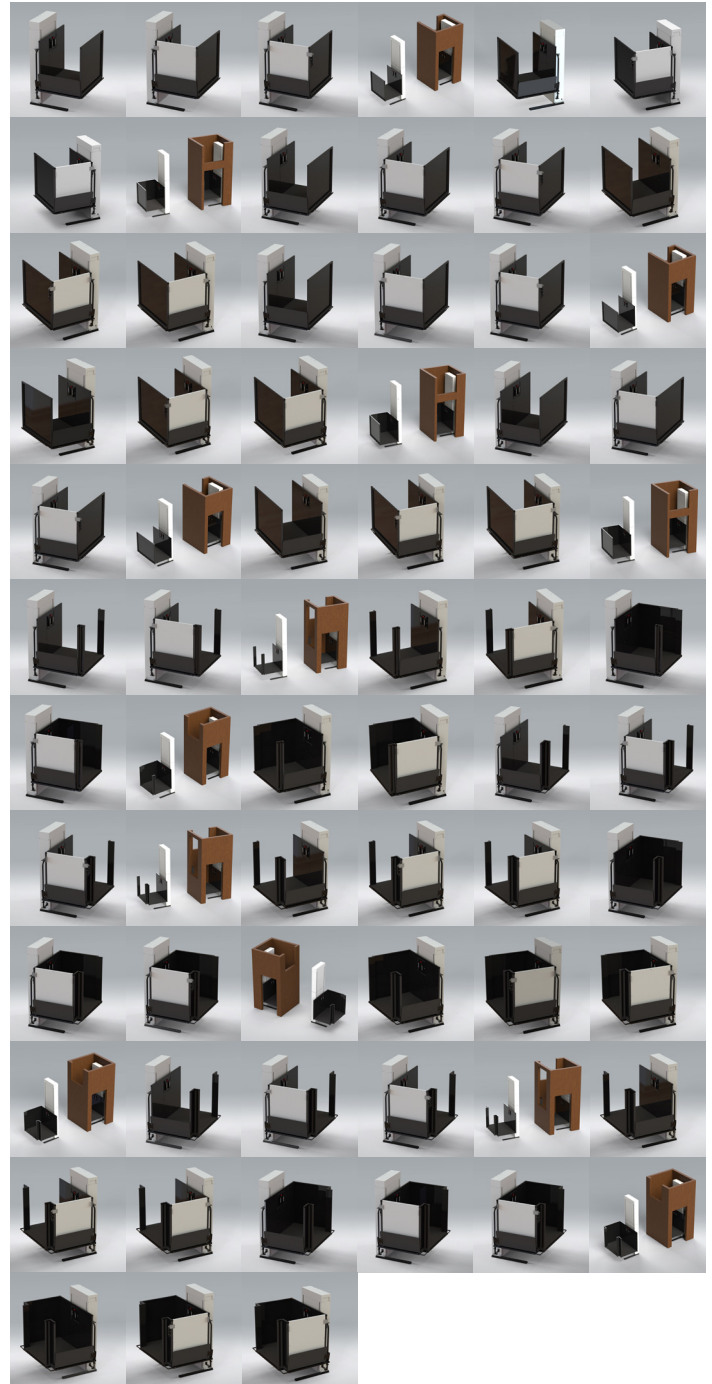
**In-out same side, straight
through, 90 degree access**

MAX PLATFORM SIZE:

**W42" x L60"
(18 square feet)**

CUSTOMIZATION:

The FLEX VPL is a versatile lift system offering flexible sizing and configurations. It features customizable options like colors, handrails, push buttons, and safety devices. It can also be tailored for three-stop configurations and varied entry/exit layouts to meet specific space and accessibility needs.



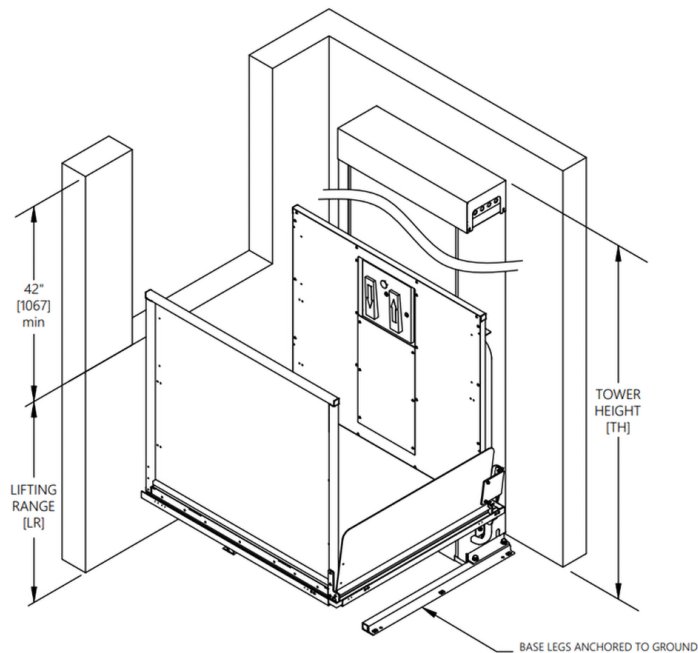
Sizing

	Platform Size	Total Footprint (with tower)
Straight Through Access	W36" x L48"	W52.5" x L48"
	W36" x L54"	W52.5" x L54"
	W36" x L60"	W52.5" x L60"
90 Degree Access	W42" x L48"	W56" x L48"
	W42" x L54"	W56" x L54"
	W42" x L60"	W56" x L60"

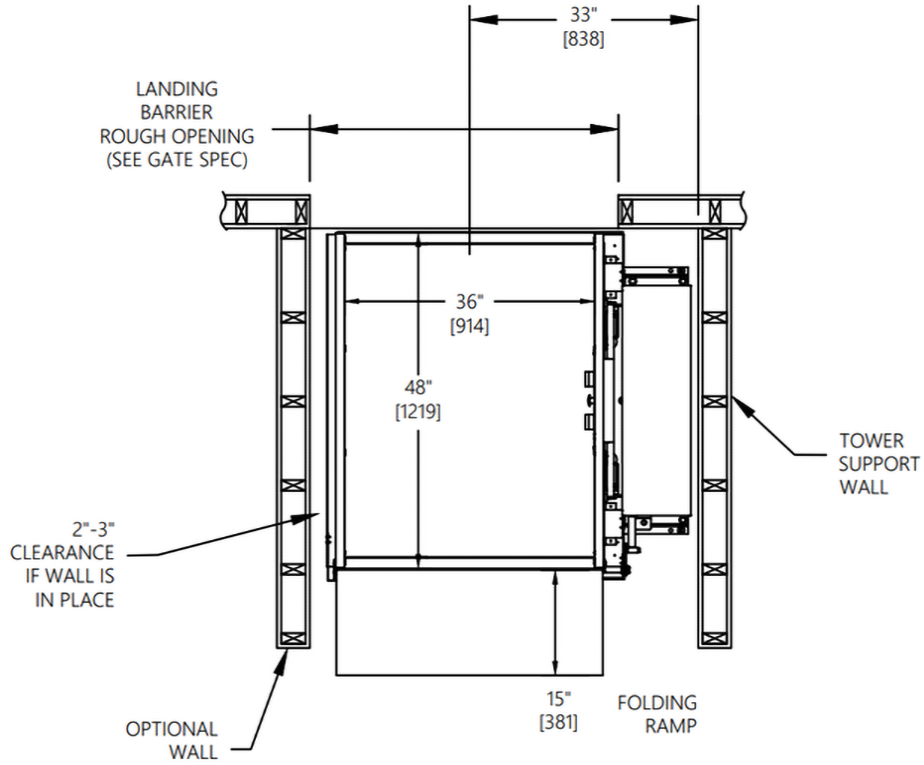
* Excluding toe plate

Tower Heights		Weight of Lift
Max Lifting Height (LR)	Tower Height (TH)	(Platform load not included)
28"	50.5"	510 lb
52"	74.5"	560 lb
72"	94.5"	600 lb
96"	120.5"	645 lb
120"	144.5"	695 lb
144"	168.5"	740 lb
168"	192.5"	790 lb

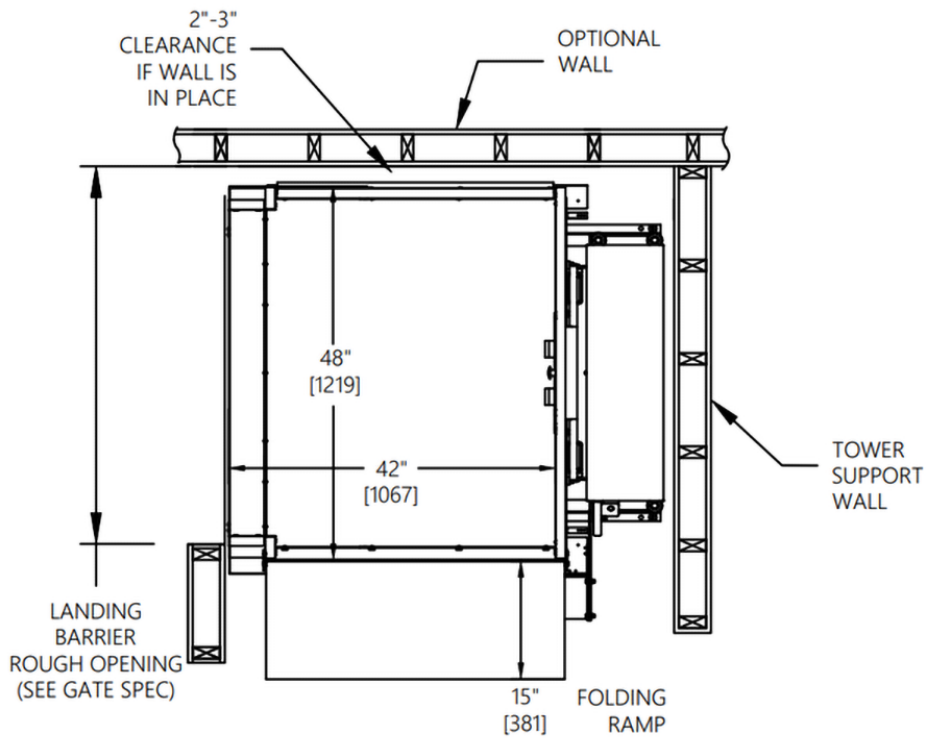
* Exact weight may vary depending on selected options



36"x48" Straight Through (Base Configuration)



42"x48" 90 Degree (Base Configuration)

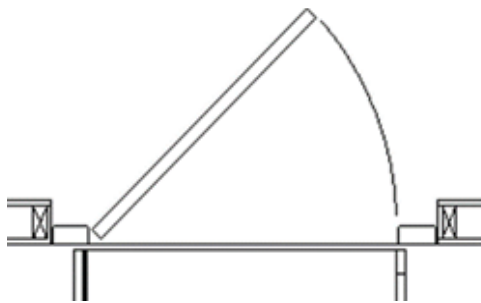


LANDING BARRIERS

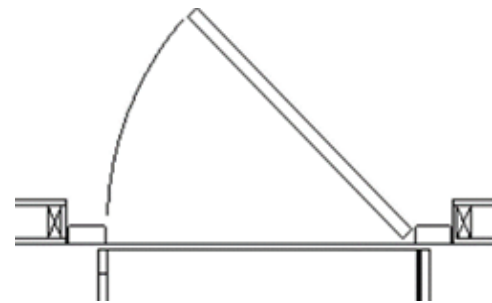
With its compact flexible design and simple installation, the Flex Lift's legacy of affordable mobility spans over 35 years.

Option for landing barriers are as follows :

- Steel Gate (shown)
- Steel Door
- Aluminum and Glass Gate
- Aluminum and Glass Door
- Fire-Rated Door
- Customer Supplied Barriers (supply interlock only)
- Automatic Door and Gate Operators



Left Swing



Right Swing



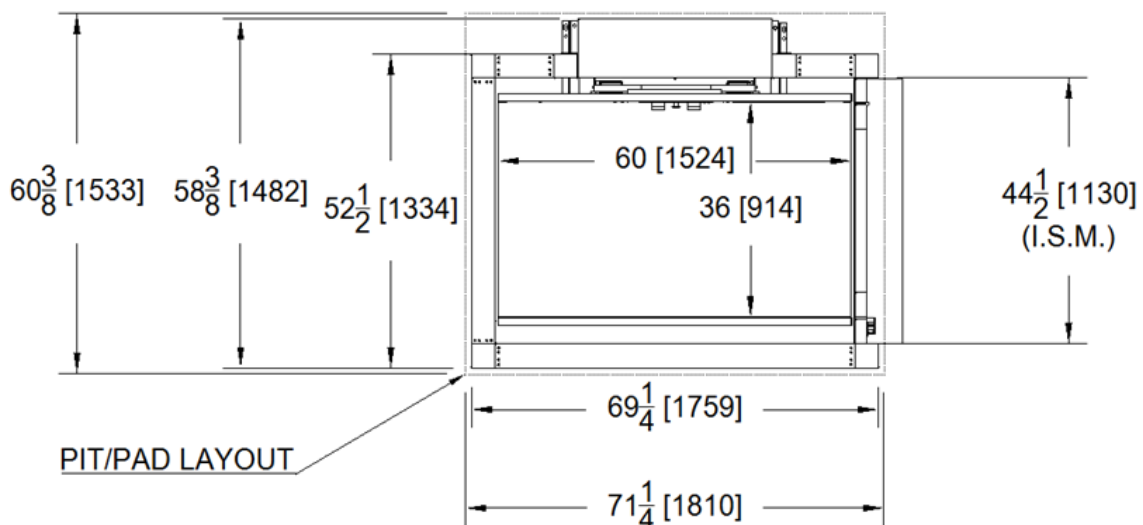
ALUMINUM AND GLASS ENCLOSURES

Outdoor or Indoor Applications

Flex Lift also offers the option to be enclosed in aluminum and glass structures, enhancing both the functionality and aesthetic appeal. These enclosures provide additional comfort and protection from the weather, making them suitable for outdoor or exposed installations. Full-size doors at each landing allow for easy access, and the enclosures can be further customized with features such as roofs, lighting, and custom colors to match specific design preferences.



Top-Down View



KEY FEATURES

Zero-Load Start Design

RAM's patented zero-load-start design allows the motor to reach full speed before lifting the load. This unique feature allows for full functionality during extreme weather and extends the life of all power & drive components.

Soft Touch Paddle

The patented RAM Soft Touch Paddle controls are oversized and responsive, allowing users to get moving with ease.

Total Customization

The FLEX VPL is a versatile lift system offering flexible sizing and configurations. It features customizable options like colors, handrails, push buttons, and safety devices. It can also be tailored for three-stop configurations and varied entry/exit layouts to meet specific space and accessibility needs.

Easy to Install

The Flex Lift comes with easy to maneuver components that can be assembled quickly with minimum site preparation.

All-Electric Drive System **RA**

RAM's field-proven electric drive system is reliable, powerful and whisper-quiet.

Plus, no hydraulic fluid = no harsh smells.

RA = RAM Advantage, an essential feature found in all of our products.





Installation Considerations

Important things to consider for the installation location:

- Provide 15amp, 110V dedicated circuit no more than 8 feet away
- Secure tower to wall for all lifts with travel greater than 52in
- For exterior installations a secure footing – typically a concrete pad 5ft x 5ft
- For unenclosed units with travel greater than 52", a carriage gate is required

Superior Reliability

Two tiers of emergency auxiliary power are available for every RAM product:

1. Emergency manual crank (Standard)
2. Full battery 40-cycle backup that will run the motor with full load for 40 cycles during a power outage (Optional)

Code Relevance

Designed to meet ASME A18.1 and CSA B355 safety standards when properly equipped.

While RAM VPLs meet national standards, it is imperative to check State/Provincial and Local code requirements before ordering to ensure compliance. All State/ Provincial and Local compliance is the responsibility of the purchaser. Some states may require fees for site preparation and permits.



trustram.com
1-800-563-4382

